

# MaxxECU

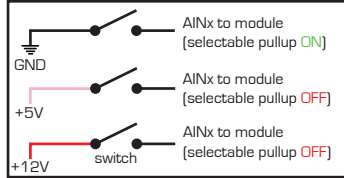
All AIN have selectable pullup resistors.

Sensor GND must **NEVER** be connected to chassis OR engine!  
Do not connect ECU and Module 5V supplies!  
Sensors connected to the Module should use the Module 5V supply, not the ECU 5V supply.

Example wiring. All AIN functions are assigned in MTune.

Example: 0-5V sensor [selectable pullup OFF]

Digital input switch wiring examples



Example: Temperature sensor [selectable pullup ON]

Example wiring for trigger signals.  
All Pulse Input functions are assigned in MTune.  
All Pulse inputs have selectable 5V pullup resistors  
All Pulse inputs support both VR and digital signals.

VR sensor (analog) signal



Typical input: Wheel/driveshaft speed, ethanol sensor.

Digital sensor signal



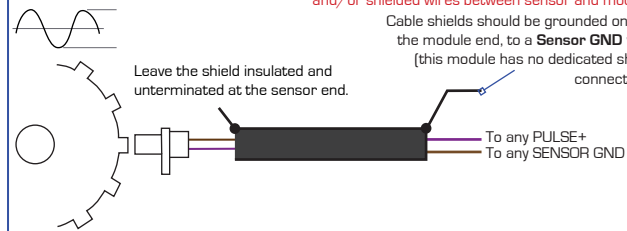
Digital sensor supply

Always verify sensor specifications with the manufacturer before connection.

Example wiring using shielded wires

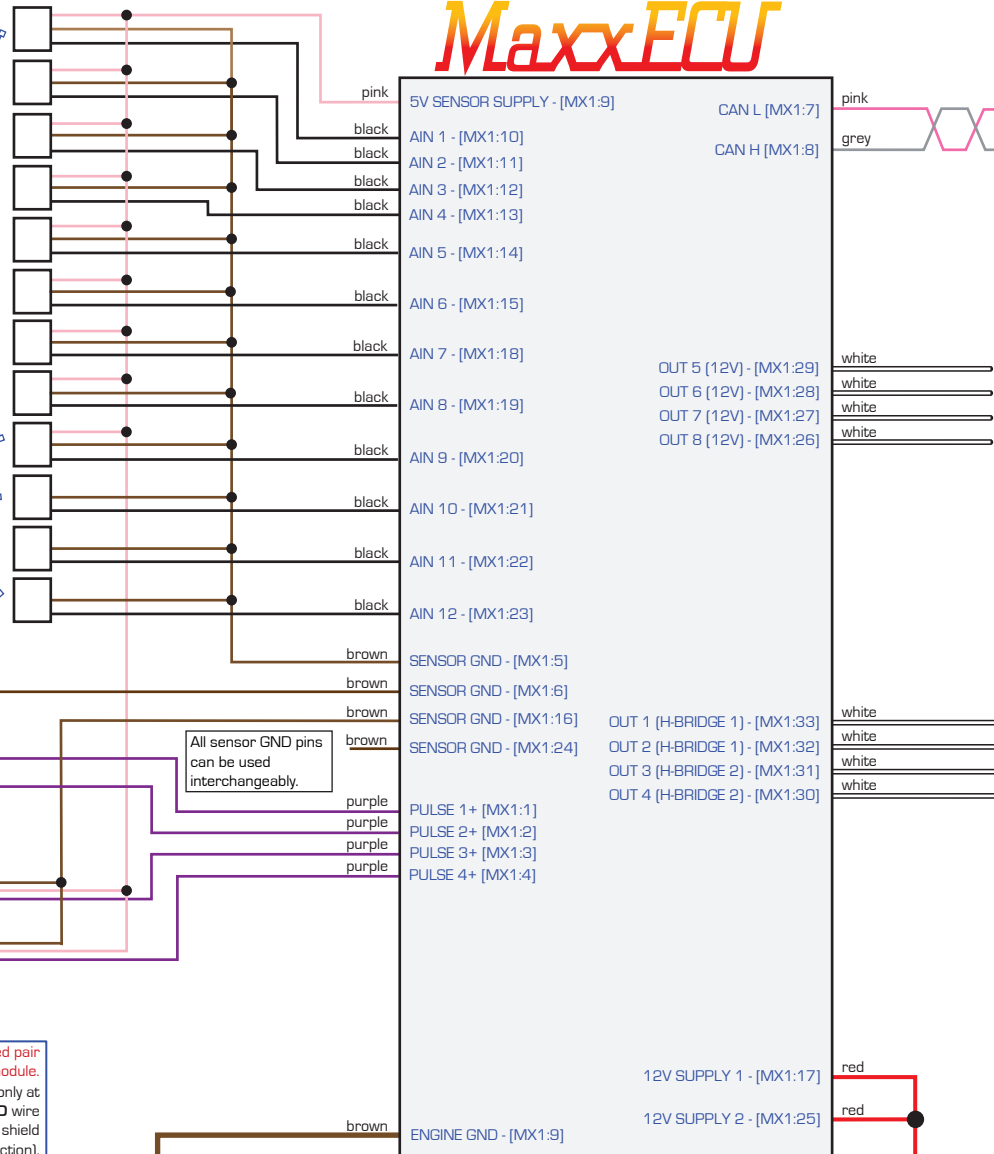
To block VR sensor interference, use a twisted pair and/or shielded wires between sensor and module.

Cable shields should be grounded only at the module end, to a **SENSOR GND** wire (this module has no dedicated shield connection).



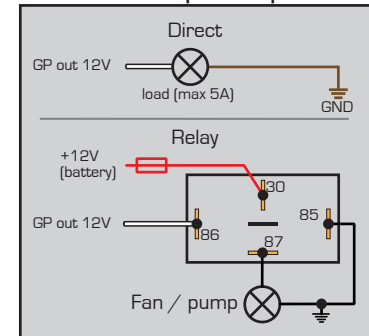
Engine or chassis

Example wiring: The module power supply must switch on simultaneously with the ECU.

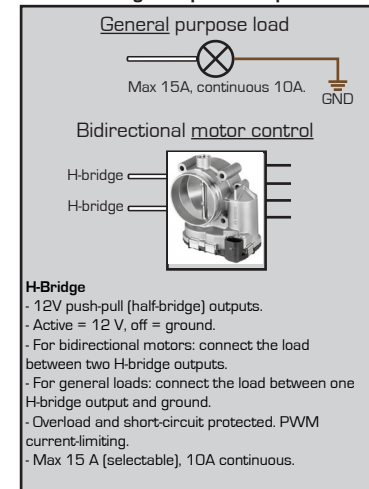


CAN-bus 1 (no built-in terminating resistor)

GP 12V output examples.



H-bridge output examples



Expansion Module Connector 1

Available connector kit

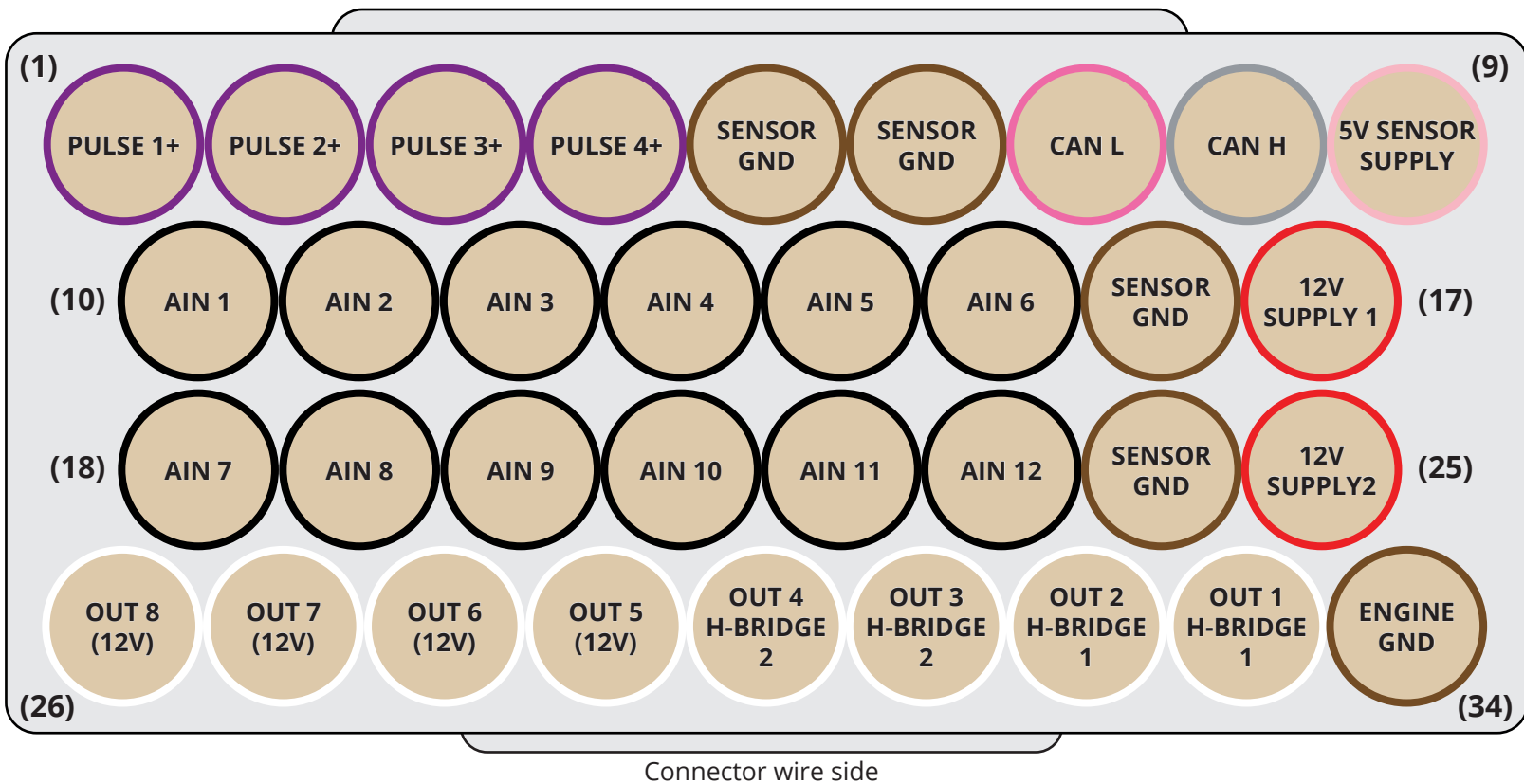
Supersal 1.0, key EXP (same as MaxxECU GEN2 series connector 1 - MX1)

Product ID: [2416](#)

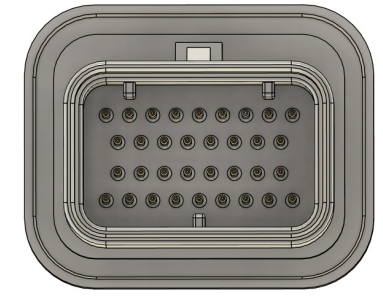
MaxxECU Expansion Module

2026-06-19

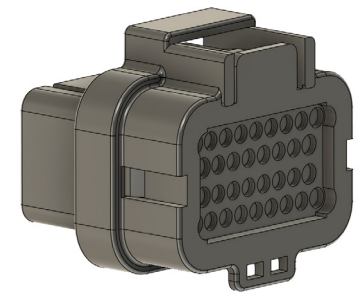
[maxxecu.com/support](http://maxxecu.com/support)



**EXP Module keying**



Module side



Wire side

| Pin | Function         | Note |
|-----|------------------|------|
| 1   | PULSE 1+         |      |
| 2   | PULSE 2+         |      |
| 3   | PULSE 3+         |      |
| 4   | PULSE 4+         |      |
| 5   | SENSOR GND       |      |
| 6   | SENSOR GND       |      |
| 7   | CAN L            |      |
| 8   | CAN H            |      |
| 9   | 5V SENSOR SUPPLY |      |
| 10  | AIN 1            |      |
| 11  | AIN 2            |      |
| 12  | AIN 3            |      |
| 13  | AIN 4            |      |
| 14  | AIN 5            |      |
| 15  | AIN 6            |      |
| 16  | SENSOR GND       |      |
| 17  | 12V SUPPLY 1     |      |

| Pin | Function           | Note |
|-----|--------------------|------|
| 18  | AIN 7              |      |
| 19  | AIN 8              |      |
| 20  | AIN 9              |      |
| 21  | AIN 10             |      |
| 22  | AIN 11             |      |
| 23  | AIN 12             |      |
| 24  | SENSOR GND         |      |
| 25  | 12V SUPPLY 2       |      |
| 26  | OUT 8 (12V)        |      |
| 27  | OUT 7 (12V)        |      |
| 28  | OUT 6 (12V)        |      |
| 29  | OUT 5 (12V)        |      |
| 30  | OUT 4 (H-BRIDGE 2) |      |
| 31  | OUT 3 (H-BRIDGE 2) |      |
| 32  | OUT 2 (H-BRIDGE 1) |      |
| 33  | OUT 1 (H-BRIDGE 1) |      |
| 34  | ENGINE GND         |      |

**Available connector kit**  
 Superseal 1.0, key EXP (same as MaxxECU GEN2 series connector 1 - MX1)  
 Product ID: [2416](#)